



AFIMSC A-Staff Construct

An **A-Staff** organizational structure at the Air Force Installation and Mission Support Center will help the center better **integrate across the Air Force** to support broader installation and mission support (I&MS) **policy and strategy implementation**. This construct will also **rebalance the center internally** to focus more on **strategy and planning**. The A-Staff model will better inform commander decisions, synchronize installation functions, improve alignment with joint battlespace partners and enhance leadership development at all levels.

Mirror Headquarters Air Force Staff Organization

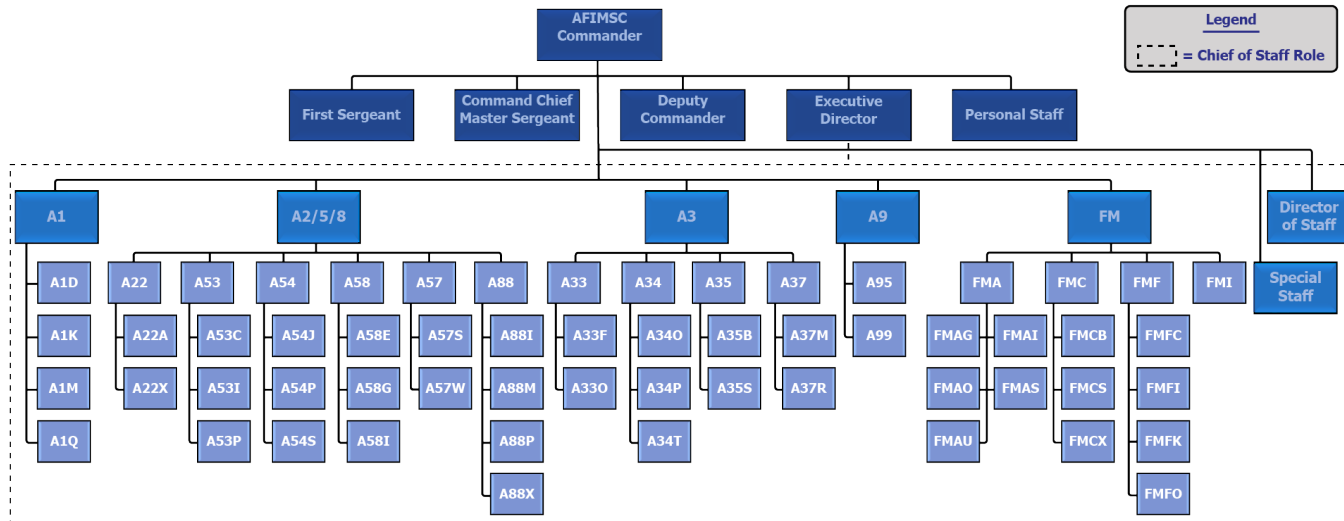


- Joint and coalition partners use similar structures (as do major commands and numbered air forces)
- Rapid, cross-functional decision support
- Aligns with future Command and Control Structure

Enhance Unity of Effort



- Synched execution of operational responsibilities
- Unified team to execute commander's guidance/intent in crisis and daily operations



Directorate Overview

Chief of Staff: Exercises executive management authority, as delegated by the Commander, in daily enforcement of staff operations and approves actions, orders and plans

A1: Manpower, Personnel, and Services: Delivers Human Capital policies, planning, resourcing to enhance warfighter readiness and lethality

A3: Operations: Provides policy, guidance, direction, oversight and coordination for I&MS operations, training and sourcing of capabilities and personnel

FM: Financial Management: Serves as the one-stop shop for all integrated infrastructure and mission support financial management decision support across the globe

A2/5/8: Intelligence, Surveillance, Reconnaissance, Strategic Plans and Requirements: Coordinates with key stakeholders to identify challenges in the future operating environment and forms intelligence-based enterprise I&MS strategy, planning and programming to establish future force capability development efforts

A9: Analyses, Assessments, Lessons Learned, and Innovation: Enables AFIMSC and the I&MS portfolio for continuous improvement of capabilities to include processes and programs from internal day-to-day workings of the organization to supporting those who provide warfighter capabilities



Ensures unity of effort



Improves joint interoperability



Supports rapid decision making



Develops future leaders

Have additional questions? Reference documents, FAQs, latest news and more on the AFIMSC website: www.afimsc.af.mil/a-staff



A-Staff Organizational Key

A1D	Force Development	A53I	Information Resource Management and Integration	A88X	Resource Planning
A1K	Personnel			A95	Innovation and Improvement
A1M	Manpower and Organization	A53P	Capability Portfolio Management	A99	Analyses, Assessments and Lessons Learned
A1Q	Diversity, Equality, Inclusion, and Accessibility Strategy	A54	Basing Division	FMI	Financial Management Integration
A22	Intelligence Surveillance and Reconnaissance	A54J	Joint Basing and Community Partnership	FMA	Financial Analysis (Budget)
A22A	Analysis and Production	A54P	Mission Beddown Support	FMAO	Financial Operations
A33	Current Operations	A54S	Strategic Basing and Posture	FMAI	Program Integration and Analysis
A33F	Freedom of Information Act	A58	Requirements Development, Program Management, and Policy	FMAU	Financial Management and Analysis Execution (non-AFCEC)
A33O	Operations Center	A58E	Expeditionary Requirements	FMAG	Financial Management and Analysis (AFCEC)
A34	Deployment and Distribution	A58G	In-Garrison Operational Requirements	FMAS	Financial Analysis Support
A34O	Air and Ground Transportation	A58I	In-Garrison Capital Investment Requirements	FMF	Financial Operations
A34P	Logistics Plans and Analysis	A57	Strategy and Concept Development	FMFC	Customer Services Section
A34T	Traffic Management	A57S	Strategy and Future Concepts	FMFI	Internal Controls
A35	Operational Readiness	A57W	Wargaming and Campaign Planning	FMFO	Enterprise Support
A35B	Expeditionary Support Blue	A88	Resource Planning and Programming	FMC	Cost and Economics
A35S	Expeditionary Support Silver	A88I	Integration	FMCB	Operations Blue
A37	The Chaplain Corps	A88M	MILCON/Military Family Housing	FMCS	Operations Silver
A37M	Mission Support	A88P	Programs	FM CX	Enterprise Operations
A37R	Resource Management				
A53	Capability Portfolio Integration and Optimization				
A53C	Portfolio Integration				

Still looking for where to go in the new A-Staff Structure?

Refer to the **A-Staff CONOPS!**

*Division offices in bold

To learn more about the A-Staff construct, utilize the following resources!

- [A-Staff Familiarization Training](#)
- [Mission Type Order Training](#)
- [Joint Orders Training](#)
- [Reoptimization for Great Power Competition](#)
- [A-Staff Transition FAQs](#)
- [A-Staff CONOPS](#)
- [A-Staff Website](#)



Have additional questions? Contact: afimsc.a-staff.workflow@us.af.mil